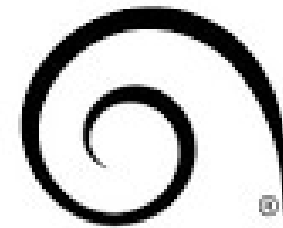


# The Sheep's Back Autumn Optimiser Wild Dog Management



Meja Aldrich

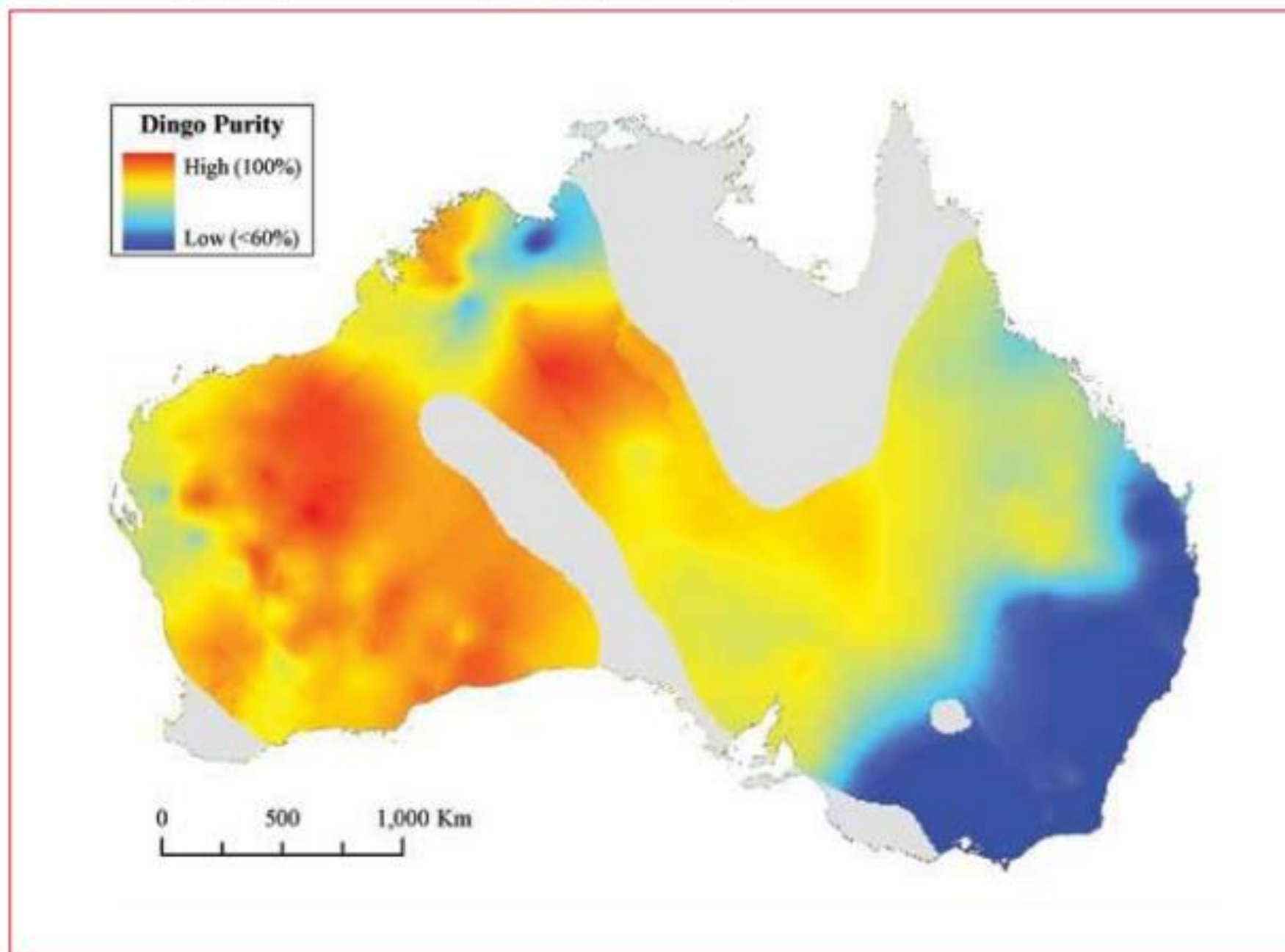
AWI Wild Dog Control Coordinator - WA



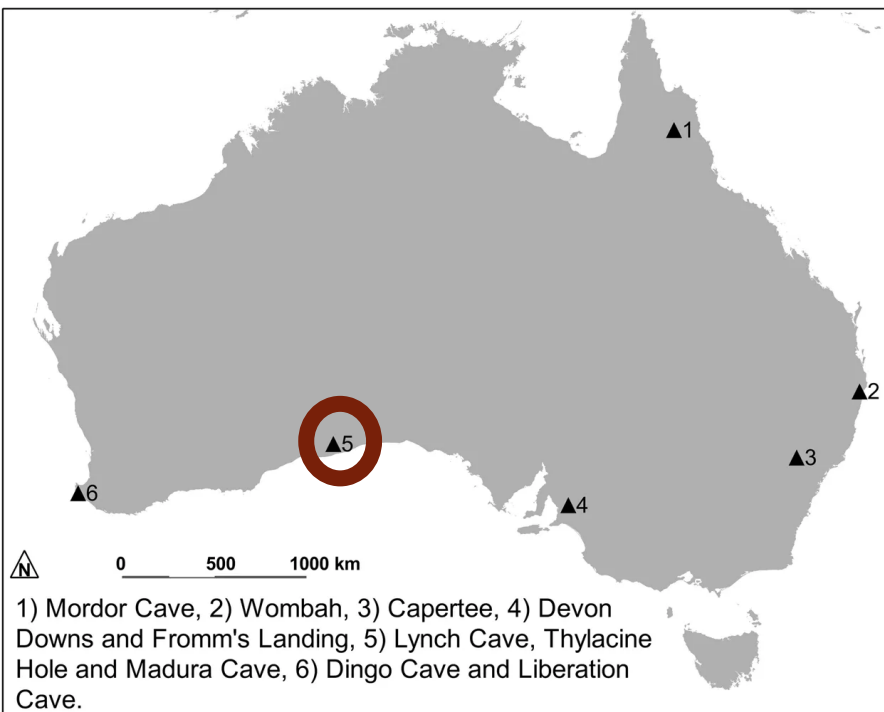
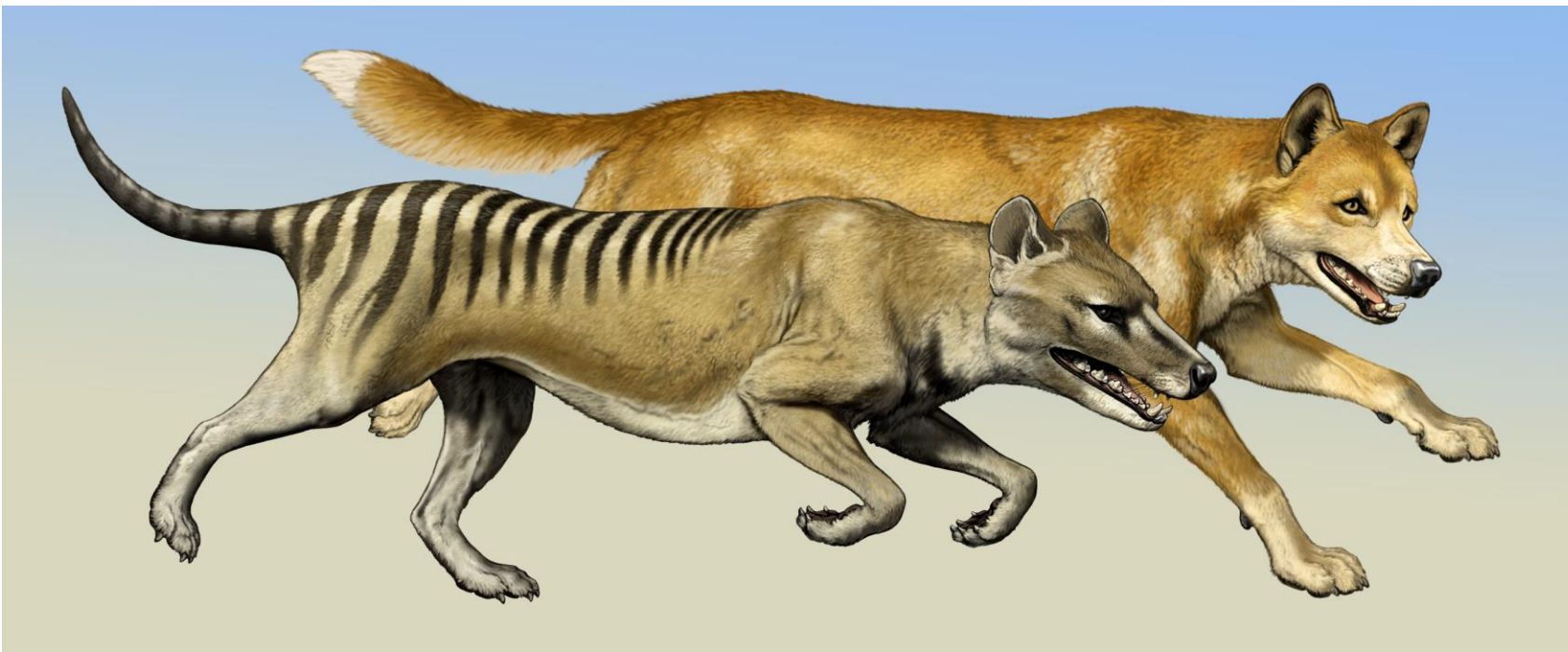
awi

Australian Wool  
Innovation Limited

**Figure 2:** Dingo purity from DNA samples (Stephens 2011)



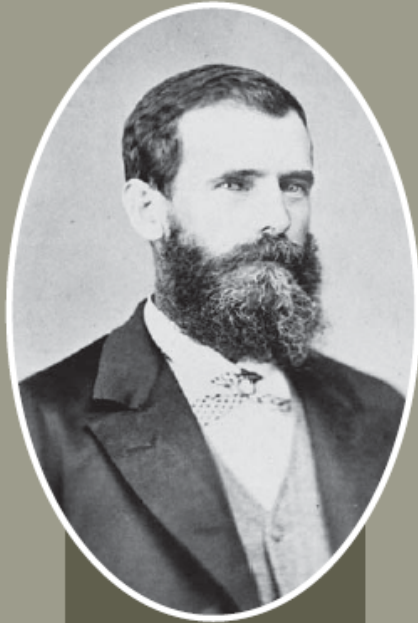
*Note: Unsampled areas shown in grey.*



Oldest dingo bones in Australia found on the Nullarbor have been accurately dated between **3348 and 3081** years old. Estimating the first dingos arrived **3500** years ago.

Tasmanian tiger and devil populations began waning **3000** years ago around the same period on the mainland.

# Old Stock Route Trail



In 1866, E. T. Hooley pioneered Stock Route 9701 when he drove 1,945 sheep from the Geraldine Mine to the Fortescue River, incredibly with the loss of only eight sheep.

Edward T. Hooley (c.1880). Courtesy of Royal Western Australian Historical Society (Inc).

## Journey onwards to:

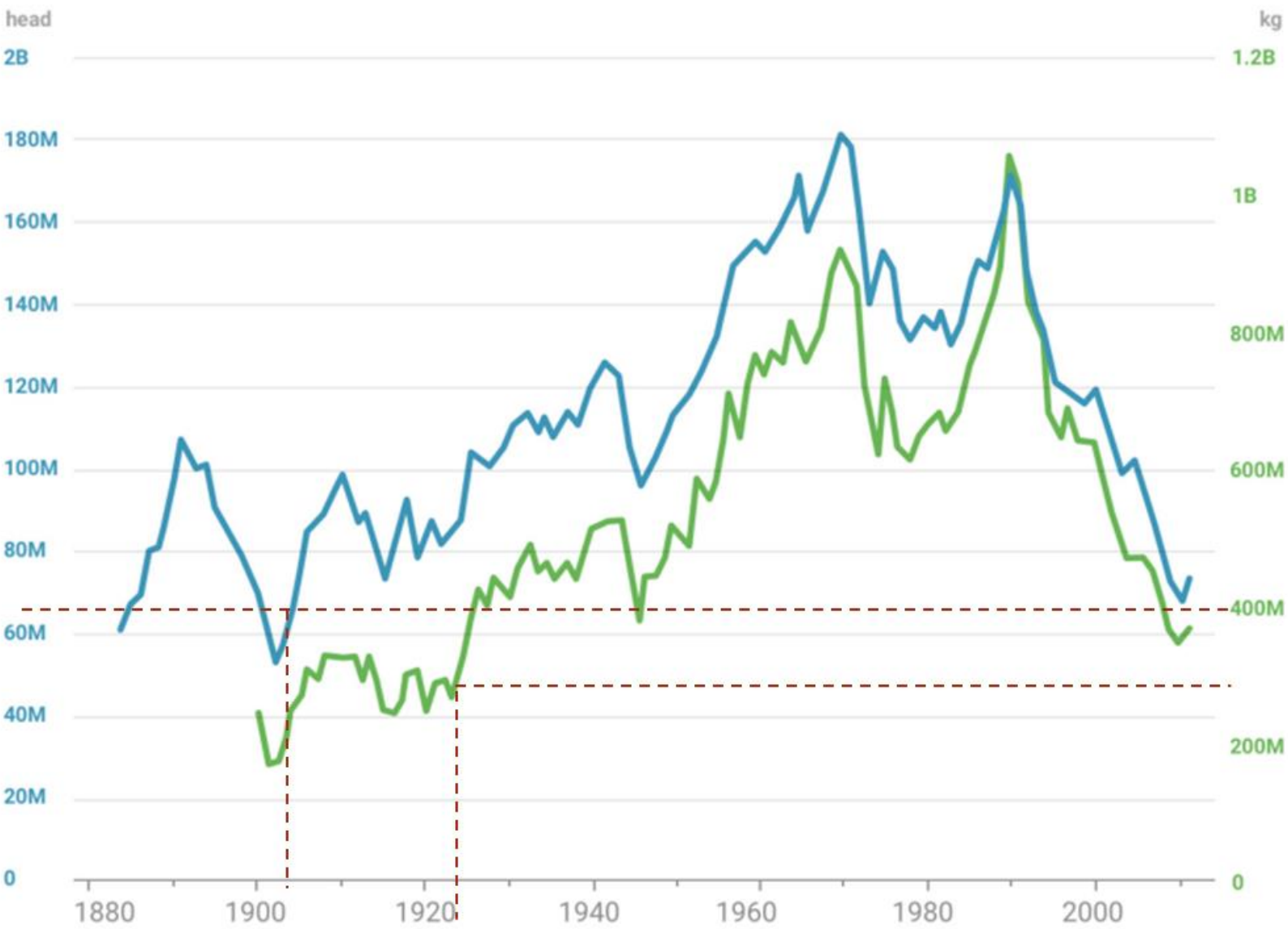
**Tallering Peak and Gorges**  
(access via Wandina Station, contact Station Manager on 9962 9597)

**Murchison Settlement**  
(more info at Shire of Murchison. Phone 9963 7999)

**Wool Wagon Pathway**  
(more info at [www.australiasgoldenoutback.com](http://www.australiasgoldenoutback.com))



# Australian Sheep Stock and Wool Production



**2020 Forecast**

National sheep flock 63.7 million  
lowest number since 1904

National wool production 272 mkg greasy  
lowest number since 1925

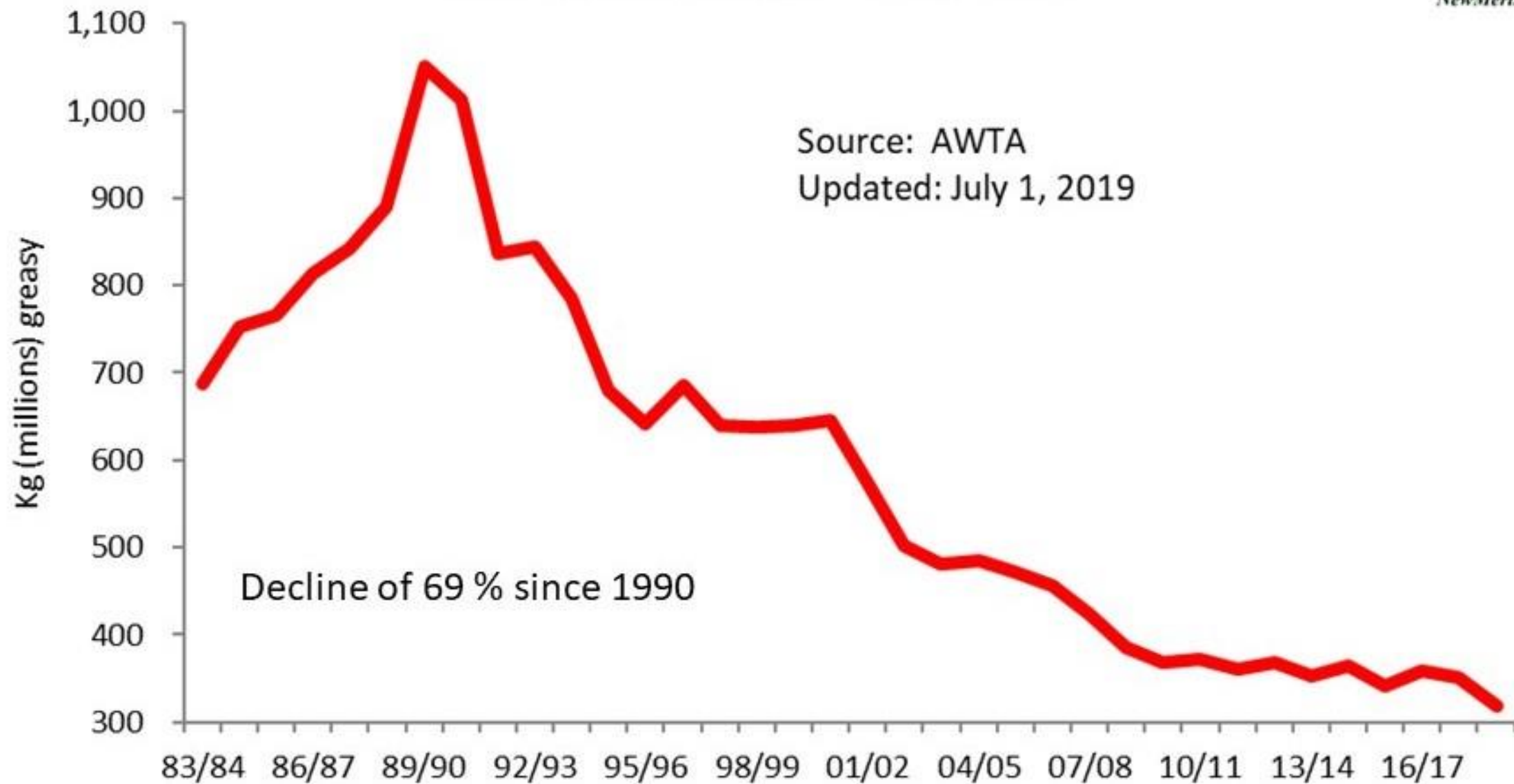
Producer Prices - United States

Data: Australian Bureau of Statistics, Gro Intelligence

● Sheep Stock ● Wool Produced

www.gro-intelligence.com

### Total Wool Production - 1983 - 2019





CENTRE FOR  
INVASIVE SPECIES SOLUTIONS



## Key components of the Western Australian Wild Dog Action Plan 2016-2021

1	Repair and maintain the existing 1190km long State Barrier Fence using a model that maximises Aboriginal employment - \$4,800,000. Aboriginal contracts have been awarded to registered Aboriginal businesses to replace and repair old fence infrastructure. A panel of Aboriginal businesses is being established to continue these works in 2018/19, 19/20 and 20/21.	4,800,000	SBF
2	Funding eight additional Licensed Pest Management Technicians via Biosecurity Groups over three years - \$2,360,000. The eight 'Doggers' are employed until 2019/20 and focus their efforts on government lands and adjacent properties.	2,360,000	LPMT
3	Murdoch University Veterinary Graduate Program to sterilise dogs in Aboriginal communities over the next three years - \$165,000. This will assist to protect the genetic integrity of the dingo and reduce wild dog impacts on the livestock industry.	165,000	Sterilise
4	4. Rangelands Cell Fencing Program - \$2,550,000 State and \$2,000,000 Federal funding to contribute to four demonstration cell fences in the WA rangelands	4,550,000	Cell Fencing
5	Employment of a DPIRD Project Manager and Development Officer over four years \$1,000,000 plus the delivery of community engagement \$200,000.	1,200,000	DPIRD Employees
6	Wild Dog research and development (R&D) - \$615,000. Employment of an early career research officer working on wild dog R&D initiatives and developing a competitive R&D grant.	615,000	R&D
7	Seek approvals and build the 660km long proposed extension to the State Barrier Fence in the Shires of Ravensthorpe and Esperance (the Esperance Extension - \$6,900,000). Refer to the Esperance extension	6,900,000	Esperance Fence
8	Capacity building and skills development in wild dog management (\$1,500,000 in Federal funds). This includes Biosecurity Group wild dog management capacity building grants, monitoring and evaluation and an R&D contribution.	1,500,000	Federal Grant
		<b>22,090,000</b>	

New Wild Dog Action Plan is currently under construction

### Other Wild Dog Funding

- IFS Sheep and Goat
- RBG State and Landholder Funding
- AWI Fencing Unit

Barry Davies  
 Senior Project Officer  
 WA Wild Dog Action Plan  
 9780 6100  
 Barry.Davies@dpiird.wa.gov.au

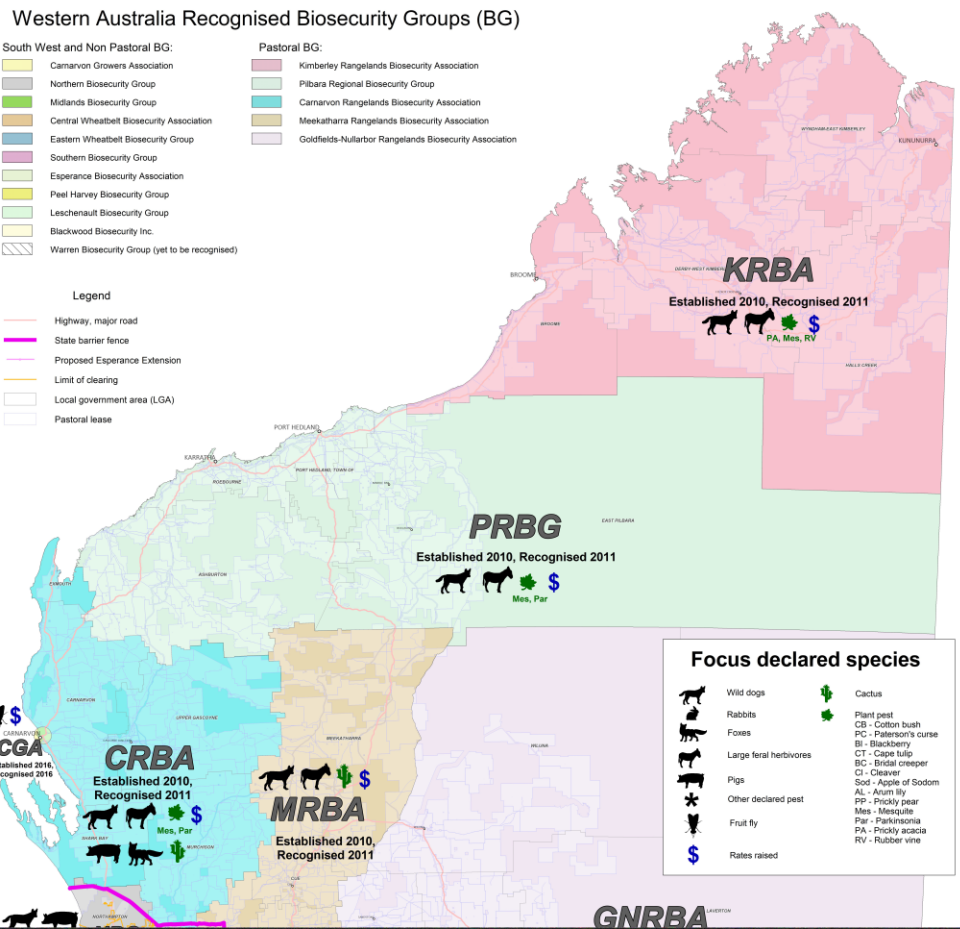
<https://www.agric.wa.gov.au/invasive-species/western-australian-wild-dog-action-plan-2016-2021>



# Western Australia Recognised Biosecurity Groups (BG)

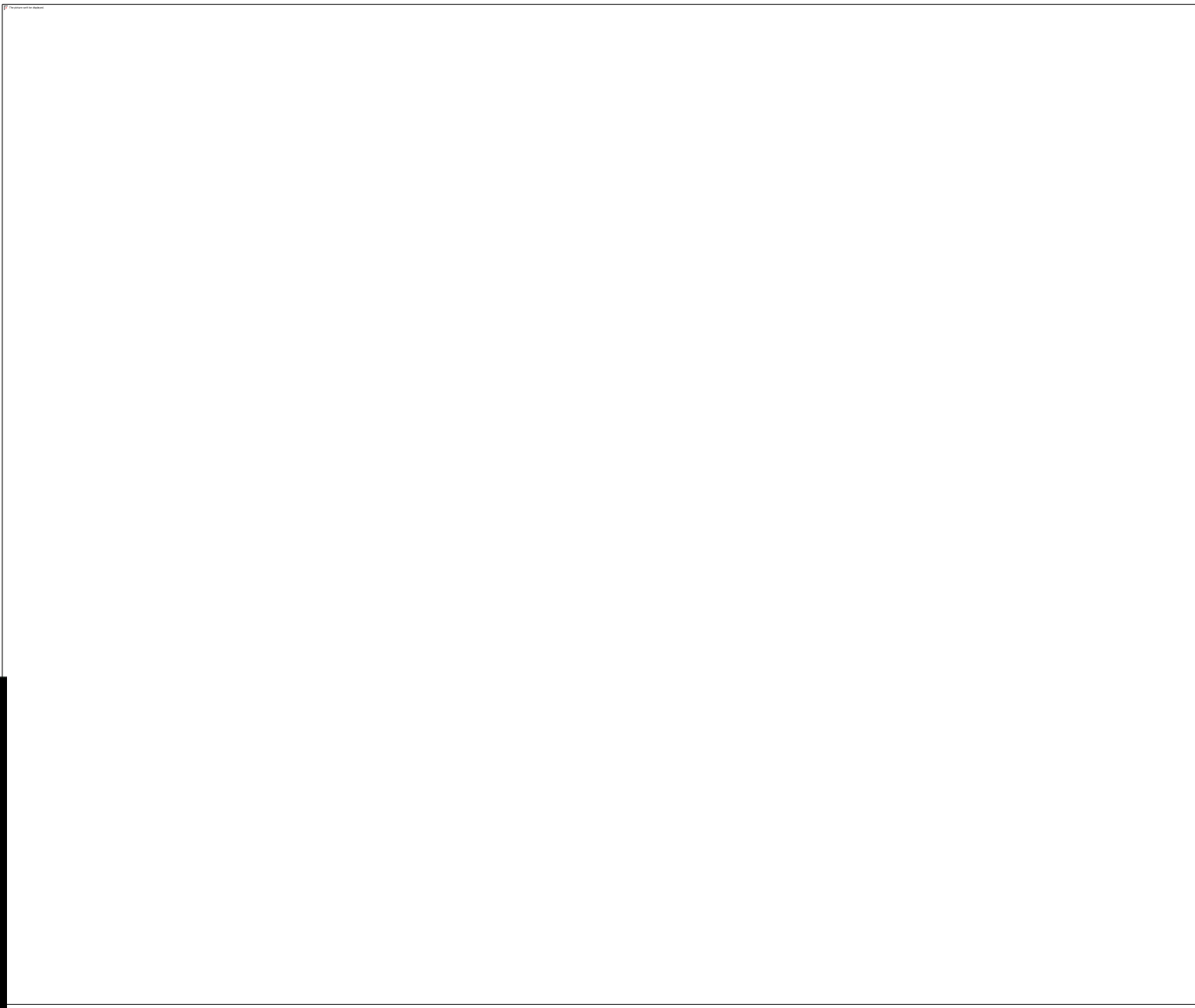
- South West and Non Pastoral BG:**
- Carnarvon Growers Association
  - Northern Biosecurity Group
  - Midlands Biosecurity Group
  - Central Wheatbelt Biosecurity Association
  - Eastern Wheatbelt Biosecurity Group
  - Southern Biosecurity Group
  - Esperance Biosecurity Association
  - Peel Harvey Biosecurity Group
  - Leschenault Biosecurity Group
  - Blackwood Biosecurity Inc.
  - Warren Biosecurity Group (yet to be recognised)
- Pastoral BG:**
- Kimberley Rangelands Biosecurity Association
  - Pilbara Regional Biosecurity Group
  - Carnarvon Rangelands Biosecurity Association
  - Meekeatharra Rangelands Biosecurity Association
  - Goldfields-Nullarbor Rangelands Biosecurity Association

- Legend**
- Highway, major road
  - State barrier fence
  - Proposed Esperance Extension
  - Limit of clearing
  - Local government area (LGA)
  - Pastoral lease



**Focus declared species**

	Wild dogs		Cactus
	Rabbits		Plant pest
	Foxes	CB - Cotton bush	CB - Cotton bush
	Large feral herbivores	PC - Paterson's curse	PC - Paterson's curse
	Pigs	B - Blackberry	B - Blackberry
	Other declared pest	CT - Cape tulip	CT - Cape tulip
	Fruit fly	BC - Bridal creeper	BC - Bridal creeper
	Rates raised	C - Cleaver	C - Cleaver
		Sod - Apple of Sodom	Sod - Apple of Sodom
		AL - Arum lily	AL - Arum lily
		FP - Flocky pear	FP - Flocky pear
		Mes - Mesquite	Mes - Mesquite
		Par - Parkinsonia	Par - Parkinsonia
		PA - Picky acacia	PA - Picky acacia
		RV - Rubber vine	RV - Rubber vine





Northern Biosecurity Group  
Marieke Jansen  
0427 898 160  
[nbg\\_eo@outlook.com](mailto:nbg_eo@outlook.com)



Central Wheatbelt Biosecurity Association  
Linda Vernon  
0473 163 050  
[eocwba@outlook.com](mailto:eocwba@outlook.com)



Midland Biosecurity Group  
Chris O'Callaghan  
0429 446 515  
[eo@mbg.org.au](mailto:eo@mbg.org.au)